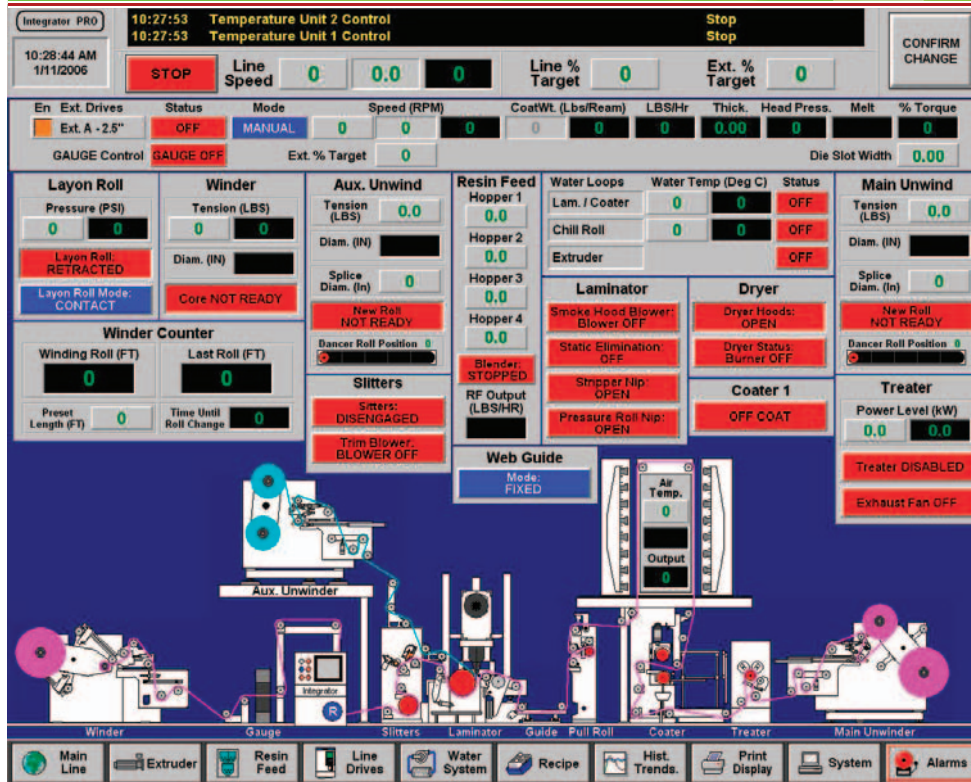


# PROCESS CONTROL



## PROCESS CONTROL AND SYSTEMS INTEGRATION

In the area of process control and systems integration, we've capitalized on the best technologies of Black Clawson Converting Machinery and Davis-Standard to offer multiple solutions backed by a team of programming specialists. Our systems are engineered in-house, giving us the flexibility to customize control packages to fit your specific process parameters and further improve upon performance, repeatability and control.

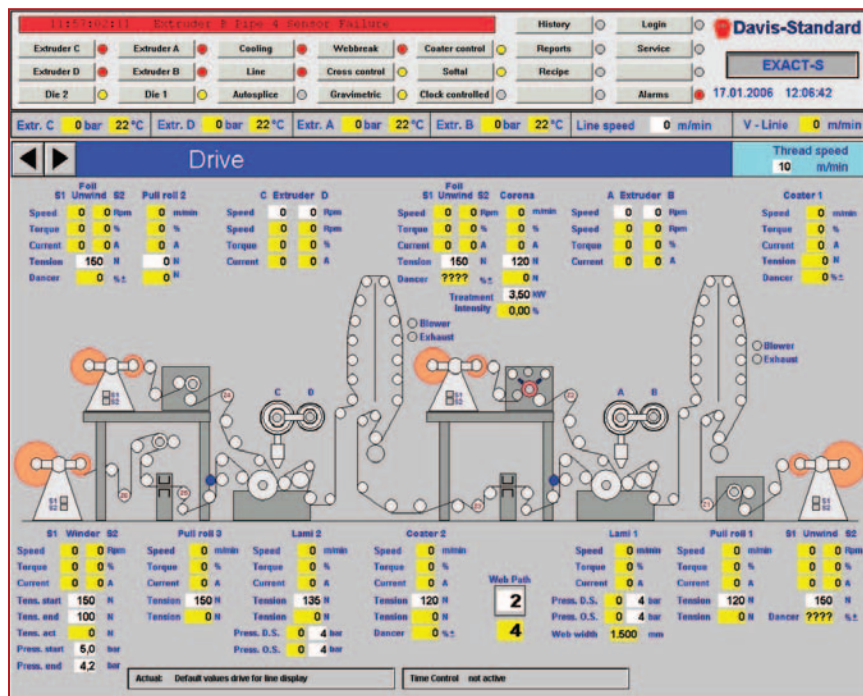
**Controls.** We are committed to supplying the most recent control technologies and high performance components. Across the board, our controls offer advantages that simplify your job.

- Operator and maintenance-friendly designs
- Expandable and flexible solutions
- Unlimited networks and communications
- ControlNet™, DeviceNet™, EtherNet, Profibus, Modbus and more
- Remote troubleshooting access via modem and/or via internet connection
- Intrinsically safe capabilities
- Can be designed for hazardous areas

**Drives.** Our systems engineers have first-hand knowledge of the converting industry and our drives reflect their insight.

Benefits include:

- AC Vector, DC and Servo drives for new and existing machine lines
- Reduced start-up times
- A seamless drive system interface
- Increased productivity due to better accuracy, higher speed ranges and reduced maintenance
- Complete, accurate and cost-effective drive system integration solutions
- Single solutions even for the most complex applications
- Pre-wiring and testing reduces start-up times and costs



For the North American & Asian markets, Black Clawson Converting Machinery and Egan are offering the **Integrator PRO**.

**Integrator PRO.** This innovative system combines total line control and data monitoring into one multi-functional information center. It is specifically designed for high-level converting processes encompassing cast film, blown film, extrusion coating, solvent and aqueous coating and drying.

- Supervisory control that integrates all converting machine line components into a single user-friendly operator interface
- Graphics-based touchscreen interface
- Historical data tracking and system security
- Recipe management
- Process reporting
- Alarm and event logging, line and extruder diagnostics
- Standard PC computer hardware with Microsoft® Windows® XP
- Wonderware software engine
- Distributed architecture and system networking capabilities
- Individual machine component details
- Line drives display
- Water recirculation diagram
- Phone line and/or internet access

For the European & Asian markets, ER-We-Pa is offering the **EXACT-S** system.

**EXACT-S** is a modern process control that links all components of the line together. Your key to developing high-quality products is the simple and repeatable operation of your line.

- Human Machine Interface
- Recipe system
- Alarming and reporting
- Historical and trending system
- Distributed client/server architecture
- High flexibility and open for alterations and extensions
- Automatic die control system
- Resin feed system with gravimetric capability

**EXACT-S** is based on standard components (hardware and software) and represents state-of-the-art automation. Highlights include:

- Industrial PC based
- 32-bit operating system (W2K or XP)
- 32-bit application software (iFix™ from Intellution)
- Distributed client/server architecture
- Automation system with distributed I/O (Siemens S7)
- Use of standard bus systems (Ethernet and Profibus)
- High degree of flexibility and adaptability
- Open, expandable and compatible

**Davis-Standard®**  
 #1 Extrusion Drive  
 Pawcatuck, CT 06379-2313 USA  
 Tel: (860) 599-1010  
 Fax: (860) 599-6258  
 www.davis-standard.com

**Black Clawson**  
 Converting Machinery  
 46 North First St.  
 Fulton, NY 13069-1297 USA  
 Tel: (315) 598-7121  
 Fax: (315) 593-0396  
 www.bc-egan.com

**EGAN®**  
 36 South Adamsville Road  
 Somerville, NJ 08876-0671 USA  
 Tel: (908) 722-6000  
 Fax: (908) 722-6444  
 www.bc-egan.com

**ER-WE-PA**  
 Mettmanner Strasse 51  
 D-40675 Erkrath/Düsseld  
 GERMANY  
 Tel: +49-211-2404-0  
 Fax: +49-211-2404-281  
 www.er-we-pa.de